

BSG

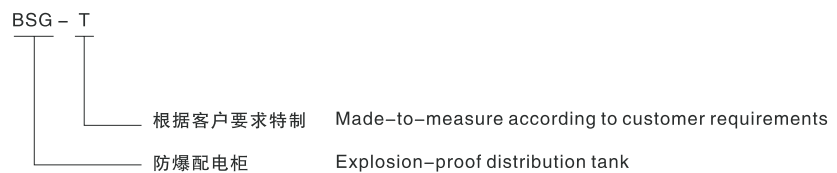
系列防爆配电箱(ⅡB、ⅡC)



适用范围 Application

- 适用于1区、2区危险场所。
- 适用于ⅡA、ⅡB、ⅡC类，温度组别为T1~T6的爆炸性气体环境。
- Can be used in hazardous areas: Zone 1 and Zone 2
- Can be used in explosive gas atmospheres of Category IIA、IIB and、ⅡC where the temperature classification is T1 ~ T6.

型号含义 Model implication



技术参数 Technical parameters

- | | |
|--|---|
| <ul style="list-style-type: none"> ■ 执行标准：GB 3836.1、GB 3836.2、GB 3836.3、IEC60079 ■ 防爆标志：Exde Ⅱ BT4、*Exde Ⅱ CT4 ■ 额定电压：AC 380/220V ■ 主回路电流：≤630A ■ 支路电流：≤400A ■ 防护等级：IP65 | <ul style="list-style-type: none"> ■ Implementing the standard : GB 3836.1、GB 3836.2、GB 3836.3、IEC60079 ■ Explosion-proof mark: Exd Ⅱ BT4、Exde Ⅱ CT4 ■ Rated voltage: AC 380/220V ■ Current of main circuit: ≤630A ■ Branch current: ≤400A ■ Protection grade: IP65 |
|--|---|

产品特点 Features

- 产品外壳为钢板焊接而成，表面粉末静电喷塑；
- 可根据用户提供的电气原理图及主要技术参数选用相应的防爆元件，设计配电箱的外形尺寸；
- 可根据用户要求布置面板，有直接操作或开门后操作等形式；
- 本产品有多种方案具备多种功能，可由用户根据实际情况定制，常见方案举例：
 - ① 多路动力（照明）

BSG

Type explosion-proof distribution tank
(II B, II C)

配电箱通过将多个防爆断路器或动力(照明)配电箱及数个防爆接线箱组合,可在电压380V,电流630A的三相交流50Hz配电系统中实现动力、照明配电设备的电能转换分配及控制。

② 多路电磁起动配电箱

通过将多个防爆电磁起动器或电磁起动箱和防爆断路器、操作柱和防爆接线箱等组合,可在电压380V的三相交流50Hz的配电系统中实现动力配送及电动机的集中控制,支路最大可达160A,可根据用户要求实现远距离控制,并可根据要求加装信号灯、电压表、电流表等监控装置。

③ 多路降压起动配电箱

将防爆降压起动箱置于防护柜中,实现交流50Hz、电压为380V,电路中容量为95kW及以下的三相鼠笼型电动机的不频繁降压起动,具有短路、缺相、过流堵转等保护功能、可以手动、自动和远控等多种方式来控制;

④ 计量、监测控制

通过内装各种防爆电表或各种二次仪表,从而实现对电路中参数、压力、温度等各种物理量的计算和监测。

⑤ 混合型

根据用户要求,将相应的防爆电器元件组合,从而满足用户现场的需求,配电柜的常见外形尺寸。

- The housing is die cast in steel plates, with high voltage static plastic-sprayed surface .
- Inside will be installed explosion-proof electrical appliances which can be relatively selected according to offered drawings specified technical data and dimensions.
- It is available to be installed in flush plate. Directly operating or operating after opening is possible.
- The products have kinds of functions and can be ordered according to practical thing examples:

① Multi-circuit power (illumination) distribution box

By being made up of several explosion-proof breakers or power (illumination) distribution boxes and a few explosion-proof junctionboxes, the distribution box can transform distribute and control power and energy of 380V, 630V, 50Hz AC three phase electromagnet-system.

② Multi-circuit electromagnet-starting distribution box

Through being made up of several explosion-proof electromagnetc starters or electromagnetic starting boxes, explosion-proof CB, operating post and explosion-proof junction box, the distribution system can transmit power and centrally control the motors of 380V, 50Hz AC three phase electrical system. The branch current can reach up to 160A to user's requirement so as to be controlled remotely. And the signal lamp. Voltmeter, ammeter, etccan be added as required.

③ Multi-circuit voltage-reduced starting distribution box

Explosion-proof voltage-reduce starter is put in the box to unfrequently start the motors of 50Hz, 380V, 95KW and below 3-phase squirrel-case. It has the protections of short-circuit, phase-failure, overcurrent and motor-block. Being controlled mannually, automatically or remotely is available.

④ Meter-controlling, inspect-controlling

Through inner explosion-proof meter or auxiliary instrument, the parameter, pressure, temperature of circuit can be measured and inspected.

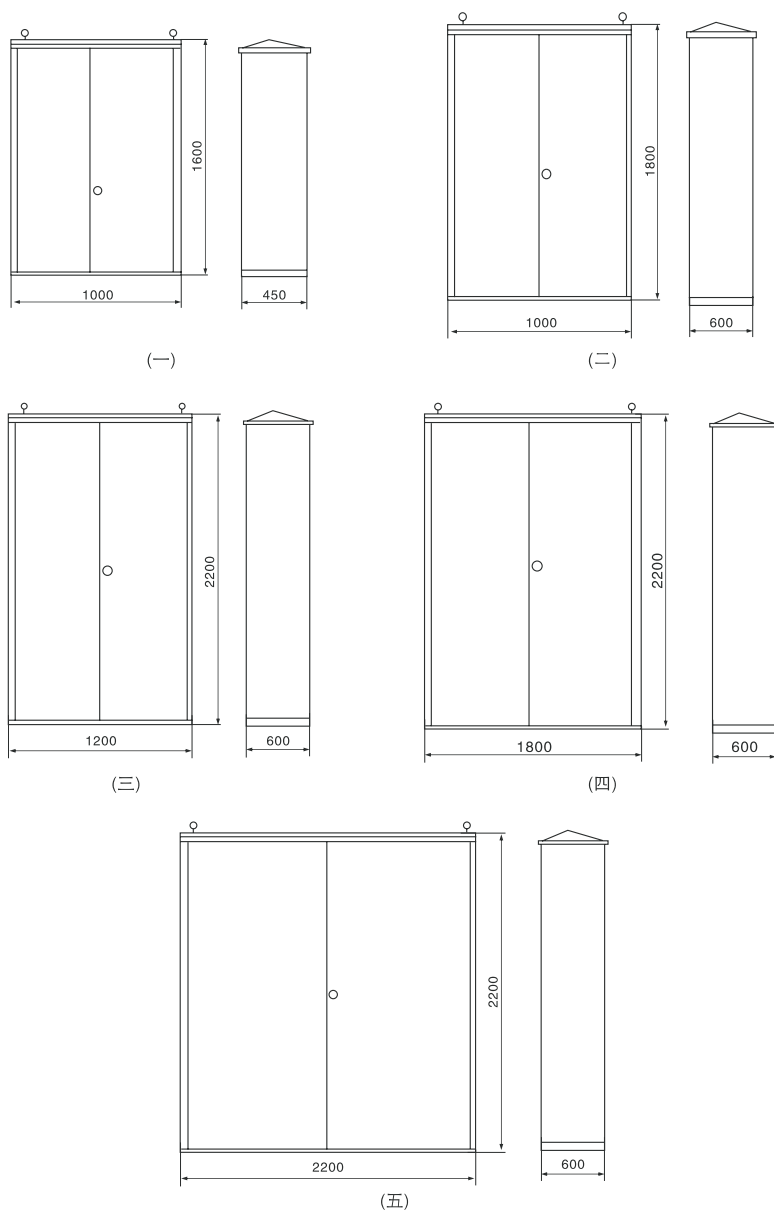
⑤ Compexity type

Combine appropriate applicanes to user's requirement to meet the demands on sits. Panel's dimension is freely determined as required.

BSG

系列防爆配电箱(ⅡB、ⅡC)

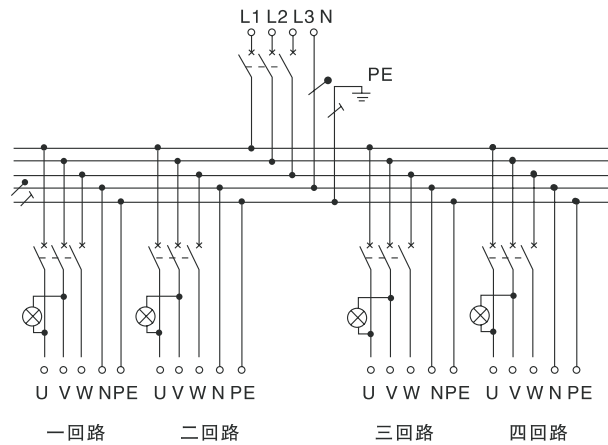
外形及安装举例 Outline and mounting example



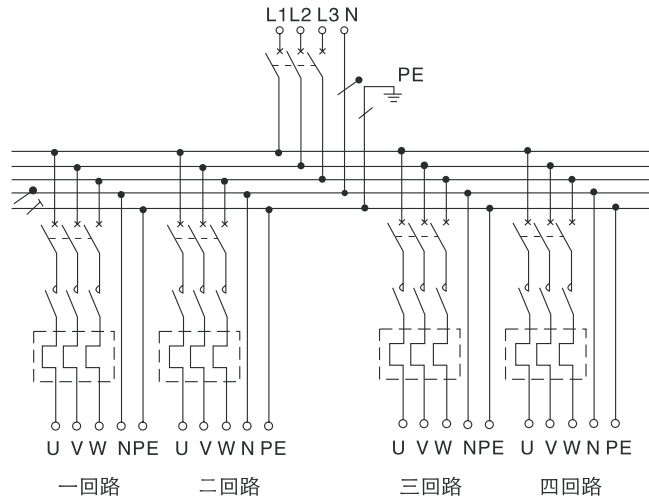
BSG

Type explosion-proof distribution tank
(II B, II C)

电器原理图 Electrical principle chart



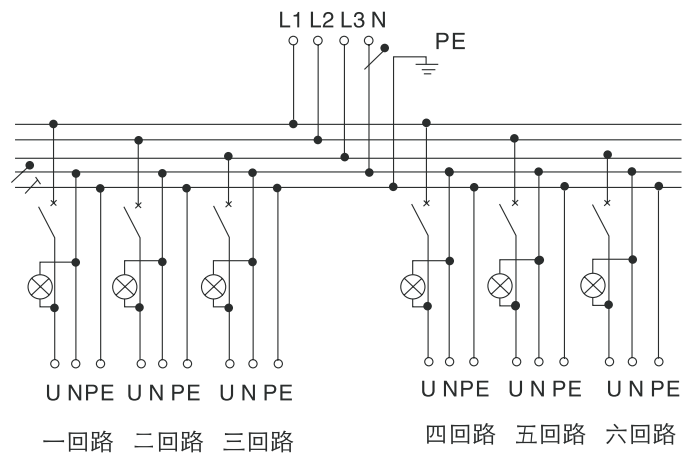
动力配电柜 Power distribution tank



电磁起动配电柜 Electromagnet-starting distribution tank

BSG

系列防爆配电箱(ⅡB、ⅡC)



照明配电箱 Illumination distribution tank

订货须知 Not ice if ordering

- 如需要ⅡC类请注明;
- 用户有特殊要求, 请提供电气系统图。
- Please note if need ⅡC group;
- If users have special request, please offering electric system diagram.