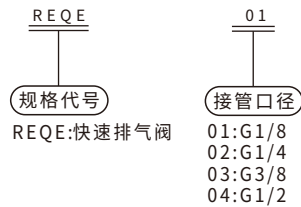
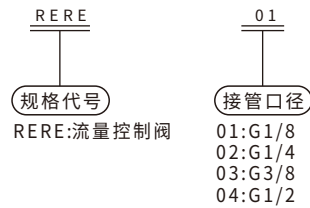




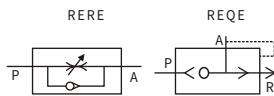
标准规格

项目/型号	RERE-01 REQE-01	RERE-02 REQE-02	RERE-03 REQE-03	RERE-04 REQE-04
使用介质	空气			
接管口径	G1/8	G1/4	G3/8	G1/2
使用压力	0~0.95Mpa(0~135Psi)			
工作温度	-5~60°C(28~140° F)			

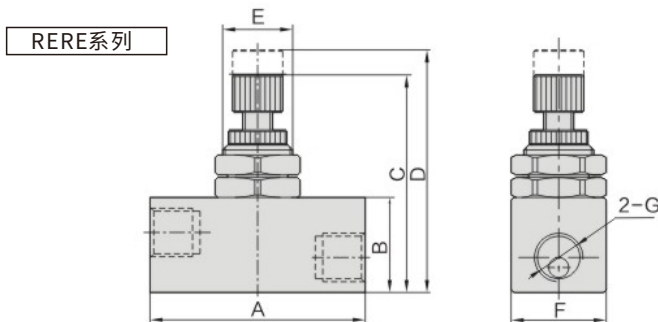
型号表示方法



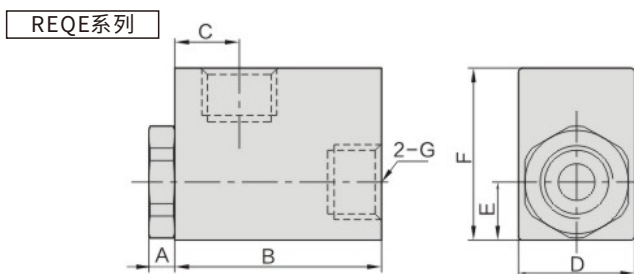
符合



外形尺寸图(毫米)



型号/符号	A	B	C	D	E	F	G
RERE-01	43	19	43	49	M14×1	19	G1/8
RERE-02	43	19	43	49	M14×1	19	G1/4
RERE-03	53	26	54	60	M18×1	26	G3/8
RERE-04	53	26	54	60	M18×1	26	G1/2



型号/符号	A	B	C	D	E	F	G
REQE-01	4	35	10.5	18	9	27	G1/8
REQE-02	6	48	15	28	13.5	36	G1/4
REQE-03	6	48	15	28	13.5	36	G3/8
REQE-04	6	48	15	28	13.5	36	G1/2